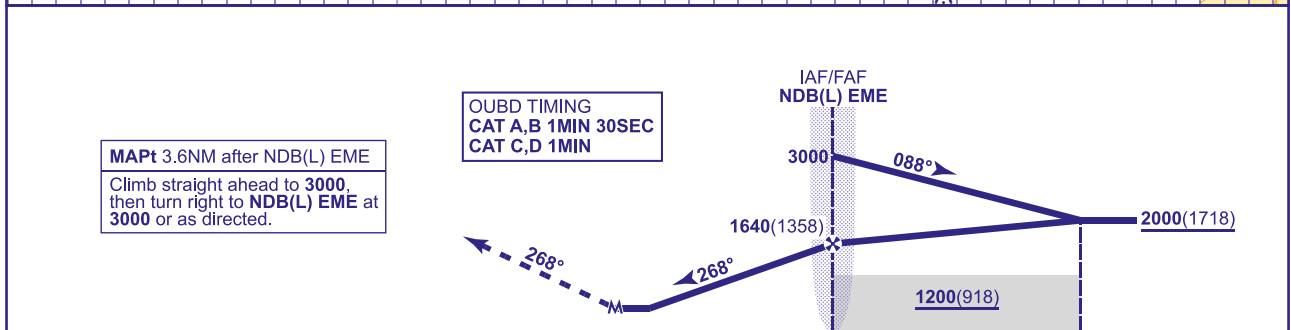


**EAST MIDLANDS**  
**LOC/NDB(L) Y**  
**RWY 27**  
(ACFT CAT A,B,C,D)



<div>THR1234.15678910NM</div>												
Aircraft Category		A	B	C	D	Rate of descent	G/S KT	160	140	120	100	80
OCA (OCH)	Procedure	700(418)	700(418)	700(418)	700(418)		FT/MIN	850	740	640	530	420
VM(C)OCA (OCH AAL)	Total Area	770(464)	800(494)	1160(854)	1160(854)		NDB(L) EME to MAPT	MIN:SEC	1:22	1:34	1:49	2:11

Notify ATC. Fly outbound leg of baseturn on NDB(L) EME QDR 109° for 1MIN 45SEC (CAT A,B), NDB(L) EME QDR 126° for 1MIN 15SEC (CAT C,D) descending to not below **2000**(1718), then turn left to establish on the LOC. MAX 210KIAS.

**NOTE** 1 Aircraft unable to receive DME I-EME notify ATC.  
2 Lowest altitude to commence procedure from hold is **3000**.  
3 Aircraft will normally be required to hold not lower than **3000**.

AERO INFO DATE 23 SEP 25

AD 2-EGNX-8-10